



Myst Enterprise

Fix'n'Rail™

Securing Portable Toilets

Operational Manual



Table of Content

Product Overview	Page 3
Parts and Mechanisms	Page 4
Assembly Instructions	Page 4, 6-7
Fitting and Types	Page 5
Product Representation	Page 8
Maintenance, Care & Troubleshooting	Page 10
Contact Us	Page 11

Operational Manual

Fix'N'Rail™

Product Overview

The Fix'N'Rail™ is a versatile and adjustable mounting system designed to securely hold portable toilets in campervans, RVs, and other vehicles. It features a sliding rail mechanism, adjustable height and width options, and compatibility with a wide range of portable toilet models. The system ensures stability and ease of use for portable toilets during transit and use.

Features

Sliding Rail System: Allows the toilet to slide out for easy access. The rail locks securely in place when fully extended to prevent movement.

Adjustable Height: Easily adjustable height for different portable toilet sizes with a simple push-and-pull mechanism.

Adjustable Width: Extends or contracts to fit toilets of various dimensions.

Secure Installation : Can be firmly mounted to the floor using screws for added stability.

Compatibility: Includes a default hook for **Rocktrail, Seaflo, and Burnsco** models.

Additional hooks are required for:

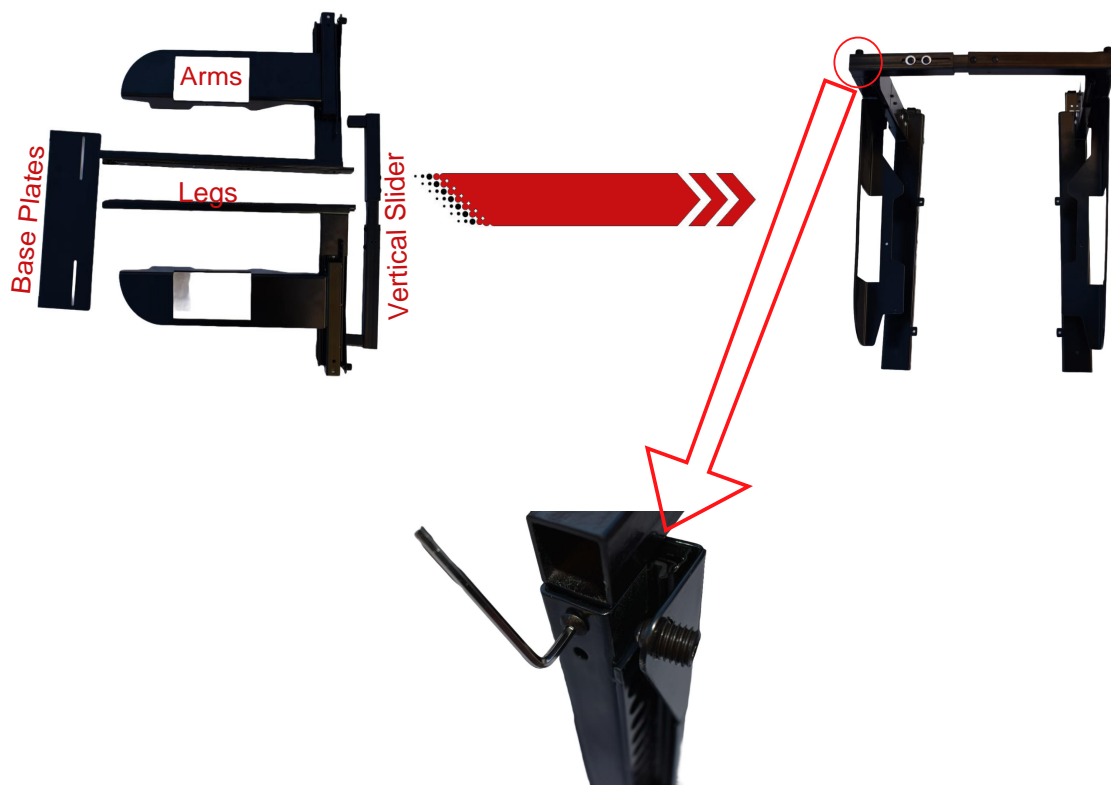
- **Thetford 145, 165, 345, 365**
- **Dometic**

Parts & Mechanism Included

- Fix'n'Rail™ base unit with sliding rail system
- Height-adjustment mechanism
- Width-adjustment mechanism
- Default hook(s)
- Screws and Allen Keys for assembly
- Optional hooks (separate for Thetford and Dometic models)

Setup Instructions

Start by assembling the main components, ensuring the rail holes are facing the toilet slot. This positioning ensures the parts will align correctly during the next steps.



Fittings & Types

Range



Porta Potti

A Thetford's Porta Potti (145) can be secured with the Thetford hook



Thetford 165

A Thetford's (165) Toilet can be secured with the Thetford Hook



Rocktrail

Rocktrail's Portable Toilet can be secured with the default hooks



Burnsco

Burnsco Portable Toilets can be secured with the default hook



Dometic

Dometic Portable Toilet can be secured with the Dometic Hook.



Burnsco

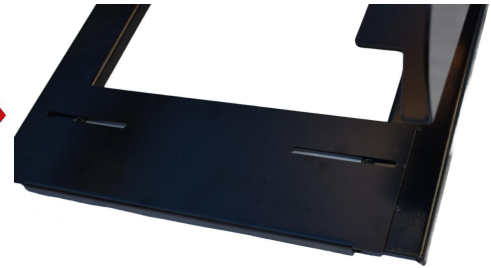
40L portable Toilet can be secured with the default hook.

2. Adjusting the Height & Width

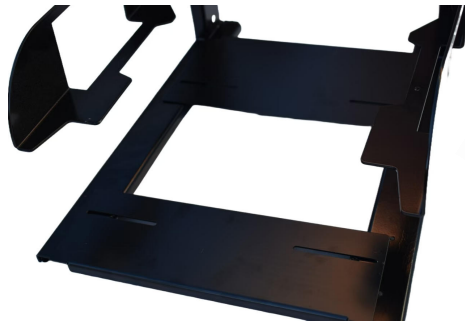
- Place both middle plates evenly on the base.
- Now, carefully position the toilet water tank on top of the arms to ensure that it sits properly.
- Then do the same with the waste tank by ensuring it fits the base and upper tank.

Take note of how it fits and adjust as needed for proper alignment.

2x Middle Plates

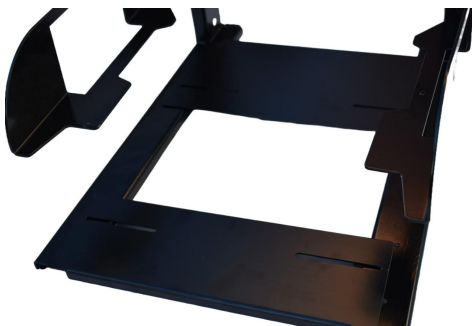


Arm



- Ensure the height is set so the toilet sits securely on the arms.
- Once the desired height is reached, lock the vertical rails mechanism in place by securing the adjustment Screw (highlighted in red circle).

Adjust until the base and height is aligned with the toilet.



Step 3: Tighten the Screws

Using the provided L key (Allen wrench), tighten the screws to secure the plates and verticle slider at your desired position.

Ensure that all parts are even, including the side bars and the plates.

2x Allen Keys
4x Screws



Step 4: Fix the Handle to the Bar

Now, attach the handle to the bar. This step is important to ensure the toilet handle is securely fixed, in compliance with safety and functionality standards, ensuring it is "fixed" and stable during use.



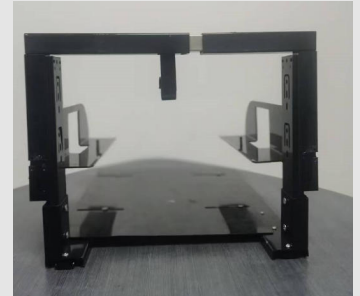
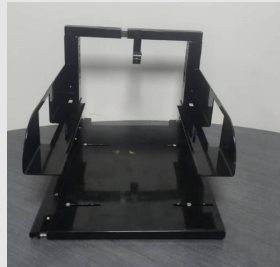
Separate handles for
Different versions of Portable Toilets

Secure the Base:

Once the Assembly is complete based on your portable toilet settings, secure the base with the floor.

Representations

Angles



*Make Use of Old Portable Toilets &
Recycle Plastic of Hundreds of
Thousands of Kgs. But Are You
Prepared to Take the Step?*

Maintenance and Care

Maintenance and Care

Clean Regularly:

- Wipe the rail and hooks with a damp cloth to remove dirt and debris.
- Ensure the sliding rail is free of obstructions for smooth operation.

Check Screws:

- Periodically check the screws on the base to ensure they remain tight.

Lubricate the Rail:

- Apply a small amount of lubricant to the rail for smooth sliding action.

Safety Tips

- Always ensure the rail is locked before using the toilet to prevent accidental movement.
- Do not exceed the weight capacity specified by the portable toilet manufacturer.
- Use only the recommended hooks for compatibility with specific toilet models.

Troubleshooting

Rail does not slide smoothly	Clean the rail and apply lubricant to the sliding mechanism.
Toilet feels unstable	Check the height and width adjustments and ensure the hooks are securely attached.
Sliding rail does not lock	New Devices needs a couple or more times in and out to smoothen the locks. Verify the locking mechanism is engaged properly. Tighten screws if necessary.
Hook does not fit the toilet	Ensure the correct hook is used for your toilet model. For Thetford and Dometic models, purchase the required hook.
Up/Down Slides	Ensure and adjust the screw tightness based on the need.
Width Adjustment	Verify Alignment, and check for looseness. Tighten the screws after adjusting the width.
Screw Base Loose	Check Floor Surface, and inspect screw loosening. If applicable use screw adhesive.
Fix'n'Rail System Wobbling	Recalibrating - Make sure the surface is even/flat and the screws, height & width are tightened and aligned.



Myst Enterprise

Contact US

Email: info@mystenterprise.com

Product Page: [Fix'n'Rail™ Portable Toilet Bracket](#)

