



Myst Enterprise

# Fix'n'Rail™

Securing Portable Toilets

Operational Manual



# Table of Content

Product Overview	Page 3
Parts and Mechanisms	Page 4
Assembly Instructions	Page 4, 6-7
Fitting and Types	Page 5
Product Representation	Page 8
Maintenance, Care & Troubleshooting	Page 10
Contact Us	Page 11

# Operational Manual

## Fix'N'Rail™

### Product Overview

The Fix'N'Rail™ is a versatile and adjustable mounting system designed to securely hold portable toilets in campervans, RVs, and other vehicles. It features a sliding rail mechanism, adjustable height and width options, and compatibility with a wide range of portable toilet models. The system ensures stability and ease of use for portable toilets during transit and use.

### Features

*Sliding Rail System:* Allows the toilet to slide out for easy access. The rail locks securely in place when fully extended to prevent movement.

*Adjustable Height:* Easily adjustable height for different portable toilet sizes with a simple push-and-pull mechanism.

*Adjustable Width:* Extends or contracts to fit toilets of various dimensions.

*Secure Installation :* Can be firmly mounted to the floor using screws for added stability.

*Compatibility:* Includes a default hook for **Rocktrail, Seaflo, Burnsco, Camp Master, Camec, or Zempire Portacamp** models.

Additional hooks are required for:

- **Thetford 145, 165, 345, 365**
- **Dometic**

# Parts & Mechanism Included

- Fix'n'Rail™ base unit with sliding rail system
- Height-adjustment mechanism
- Width-adjustment mechanism
- Default hook(s)
- Screws for assembly
- Optional hooks (separate for Thetford and Dometic models)
- Parts: Sliders, Top Bars, Base plate, Arms



## Setup Instructions - Rails and Top Bar

Start by assembling the main components, ensuring mounting surface is even.  
The correct positioning ensures the parts will align correctly during the next steps.



Align the Top bars (Right and left) onto the Rails [Steps 1 - 4]  
Following Step 5 to secure the top bar once the width is adjusted



# Fittings & Types

## Range



### Porta Potti

A Thetford's Porta Potti (145) can be secured with the Thetford hook



### Thetford 165

A Thetford's (165) Toilet can be secured with the Thetford Hook



### Rocktrail

Rocktrail's Portable Toilet can be secured with the default hooks



### Burnsco

Burnsco Portable Toilets can be secured with the default hook



### Dometic

Dometic Portable Toilet can be secured with the Dometic Hook.

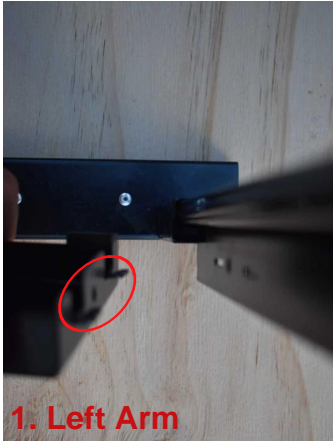


### Burnsco

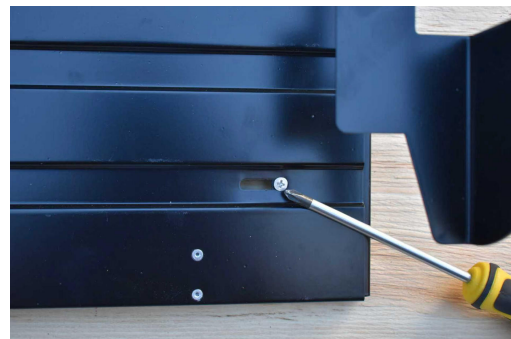
40L portable Toilet can be secured with the default hook.

## Securing the Arms and the Base

- Place arms on both sides ensuring toothed piece (highlighted in circle) is inserted in the vertical portion of the topbar [Steps 1-2].
- Now, carefully position the arms and screw them [Step 3].



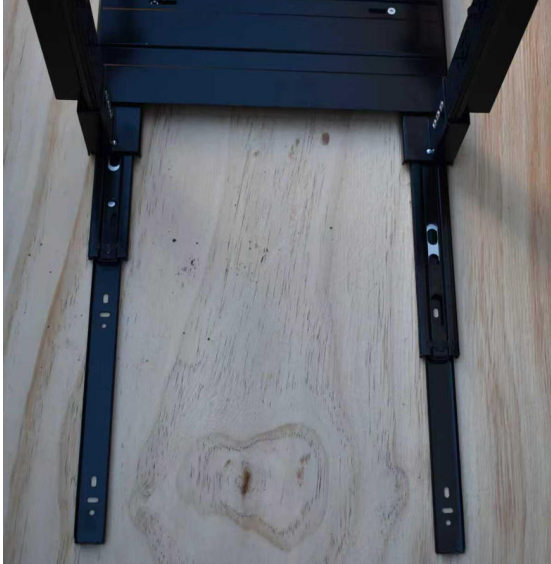
- Ensure the wheels on the base plate are facing front.
- Once the desired height and width is achieved, lock the base plate by securing the Screw.



### Step 3: Secure the Rails

Using the four screws provided, secure the rails to the floor at your desired position.

*Ensure that all parts are even, including arms, top bar, and the base plate.*



### Step 4: Fix the Handle to the Bar

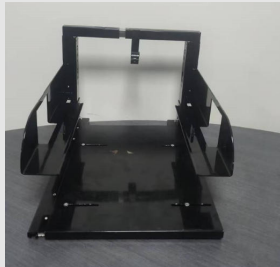
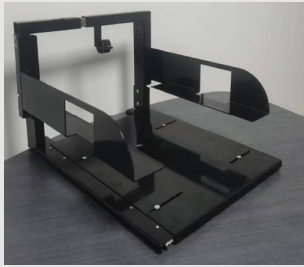
Now, attach the handle to the bar. This step is important to ensure the toilet handle is securely fixed, in compliance with safety and functionality standards, ensuring it is "fixed" and stable during use.



Separate handles for  
Different versions of Portable Toilets

# Representations

## Angles



*Make Use of Old Portable Toilets &  
Recycle Plastic of Hundreds of  
Thousands of Kgs. But Are You  
Prepared to Take the Step?*

# Maintenance and Care

## Maintenance and Care

### Clean Regularly:

- Wipe the rail and hooks with a damp cloth to remove dirt and debris.
- Ensure the sliding rail is free of obstructions for smooth operation.

### Check Screws:

- Periodically check the screws on the base to ensure they remain tight.

### Lubricate the Rail:

- Apply a small amount of lubricant to the rail for smooth sliding action.

## Safety Tips

- Always ensure the rail is locked before using the toilet to prevent accidental movement.
- Do not exceed the weight capacity specified by the portable toilet manufacturer.
- Use only the recommended hooks for compatibility with specific toilet models.

# Troubleshooting

Rail does not slide smoothly	Clean the rail and apply lubricant to the sliding mechanism.
Toilet feels unstable	Check the height and width adjustments and ensure the hooks are securely attached.
Sliding rail does not lock	New Devices needs a couple or more times in and out to smoothen the locks. Verify the locking mechanism is engaged properly. Tighten screws if necessary.
Hook does not fit the toilet	Ensure the correct hook is used for your toilet model. For Thetford and Dometic models, purchase the required hook.
Up/Down Slides	Ensure and adjust the screw tightness based on the need.
Width Adjustment	Verify Alignment, and check for looseness. Tighten the screws after adjusting the width.
Screw Base Loose	Check Floor Surface, and inspect screw loosening. If applicable use screw adhesive.
Fix'n'Rail System Wobbling	Recalibrating - Make sure the surface is even/flat and the screws, height & width are tightened and aligned.



Myst Enterprise

# Contact US

*Email: [info@mystenterprise.com](mailto:info@mystenterprise.com)*

*Product Page: [Fix'n'Rail™ Portable Toilet Bracket](#)*

